

# Quality Flex<sup>®</sup>

## BY GRAY



### INSULATED SLEEVES

#### DESCRIPTION:

Gray Flex's Insulated Sleeve product is available in 3 types with each type available in 3 R values. The Silver Sleeve is manufactured with metalized polyester, the Gray Sleeve is manufactured with non-metalized polyester, and the Black Sleeve is manufactured with polyethylene. All types are tested in accordance with U.L.181 and are appropriate for use as metal duct pipe insulators. Each type is manufactured in 5' lengths. Each box contains 1 starter cap. Fiberglass insulation is a minimum of 1 1/4" thick for R-4.2, 2" for R-6, and 2 5/8" for R-8.

#### APPLICATIONS:

Gray Flex Insulated Sleeves are used to cover standard sheet metal pipe to provide a vapor barrier and insulation. They are suitable for use in supply or return residential or commercial heating/cooling systems within the limits of their performance characteristics. These insulated sleeves are designed for indoor use only.

#### SILVER R-VALUE MODEL#

R-4.2	SS
R-6.0	SS-6
R-8.0	SS-8

#### GRAY R-VALUE MODEL#

R-4.2	GS
R-6.0	GS-6
R-8.0	GS-8

#### BLACK R-VALUE MODEL#

R-4.2	BS
R-6.0	BS-6
R-8.0	BS-8

#### BENEFITS:

- \* Lightweight and flexible/Installs easily and quickly
- \* Tear and puncture resistant jacket
- \* Helps lower energy bills
- \* Thick fiberglass insulation helps prevent condensation
- \* Easy to cut for applications needing less than 5' or to join more than one 5' piece.
- \* Improved installation time savings over duct wrap product.
- \* Provides improved pipe acoustical performance.
- \* Improves Thermal Efficiency of pipe.

#### CODE COMPLIANCE:

Meets requirements of U.L.181, SBCC, BOCA, NFPA 90A and 90B, HUD 515-2.1 (b)



### PERFORMANCE DATA:

- \* R-Value 4.2, 6.0, and 8.0 determined in accordance with ADC Flexible Duct Performance and Installation Standards as published (1991) per ASTM C-518 at installed wall thickness in flat configuration.
- \* Maximum Operating Temperatures: -20° F to 250° F
- \* Moisture Vapor Transmission: (Jacket only)  
Silver: .05 or less perms per ASTM E96  
Black & Gray: .1 or less perms per ASTM E96
- \* Fire Safety Rating: U.L. 181 (Flame spread less than 25, smoke developed less than 50)

### SIZES & PACKAGING:

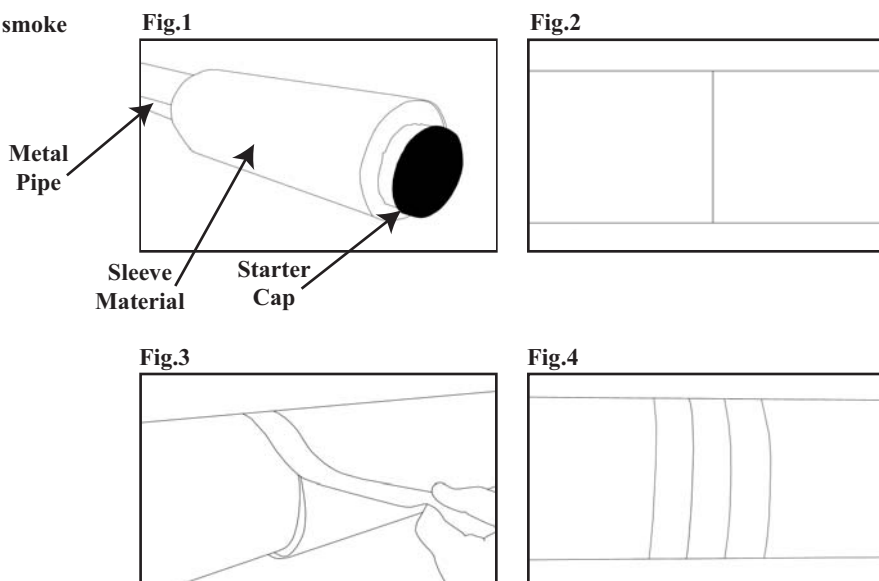
- \* Length: 5'
- \* Diameter:  
R4.2, R-6:  
4",5",6",7",8",9",10",12",14",16",18",20"  
R-8: 4",5",6",7",8",9",10",12",14",16",18",20"
- \* Packaging:  
R4.2, R-6: 10 pieces per box  
R8 4"-12": 10 pieces per box  
R8 14"-20": 5 pieces per box
- \* Each box ships with one starter cap included

### WARRANTY:

Gray Flex warrants for a period of five years from the date of purchase that all flexible ducts will be free from defects in material and workmanship only if the ducts are installed in accordance with Gray's installation instructions and under conditions specified in Gray's performance data. Gray Flex shall have no responsibility to the buyer or any third party for any special, secondary, incidental or consequential damages however arising including but not limited to; personal injury, property damage, lost profits or other economic injury due to any defect in the flexible ducts. The exclusive remedies available to the buyer for any defect in the flexible ducts shall be replacement or refund of the purchase price at Gray's option. Gray makes no warranty of merchantability or fitness for a particular purpose. Gray Flex makes no other warranties, express, implied, statutory or otherwise.

## Installation Instructions

- \* Place starter cap over pipe end. Slide Insulated Sleeve over starter cap and continue sliding sleeve down pipe.(Fig.1)
- \* If one section or less is needed then trim to length as needed.
- \* If more than one section is needed, butt join the next section to the previous section.(Fig.2)
- \* Use tape meeting U.L.181 requirements to join sections and ensure vapor seal is intact.(Fig.3)
- \* Continue joining operation until desired length is met.(Fig.4)
- \* Trim to length as needed.



GRAY FLEX SYSTEMS, INC.

Manufacturers of Flexible Air Duct  
P.O.Box 1326  
Coats, N.C. 27521  
PH: 910-897-3539  
FX: 910-897-2222  
WWW.GRAYFLEX.COM

**\* GRAY FLEX SHIPPING LOCATIONS \***  
**\* COATS, NC.      --      LAKE PARK, GA. \***